



Education of the Non-Dental Team in Improving the Oral Health of Older People in Care Homes

HARKNESS SM, MCKENNA G, MITCHELL G, HARRINGTON M, TSAKOS G, BROCKLEHURST P, LANGLEY J

ISRCTN10276613



CONTACT

Suzy May Harkness
DCT2 Restorative and Special Care
School of Dentistry
Royal Victoria Hospital Belfast

suzy.harkness@belfasttrust.hscni.net

ABSTRACT

“Improving the oral health of older people in care homes” (TOPIC) is an ongoing feasibility study funded by the National Institute for Health Research (NIHR). The study aims to assess the viability of several interventions for care home staff to improve standards of oral health in residential facilities for older people. The planned interventions are based on the 2016 NICE guideline (NG48) “Oral Health for Adults in Care Homes” and consist of an **oral health assessment** of residents, **daily “support worker assisted” tooth brushing** with fluoride toothpaste, and notably, a **staff training package** on how to improve oral health. This poster aims to highlight the training methods used to educate the non-dental team and includes some qualitative feedback from care home staff members on the developed training package.

INTRODUCTION

Our ageing population is increasing. Currently, half of all residents enter care homes with some of their own natural teeth and this is expected to increase. The prevention of dental disease is key in maintaining quality of life, function and aesthetics. The TOPIC training package has been designed using a **co-production** model with active involvement from older patients and care home staff.

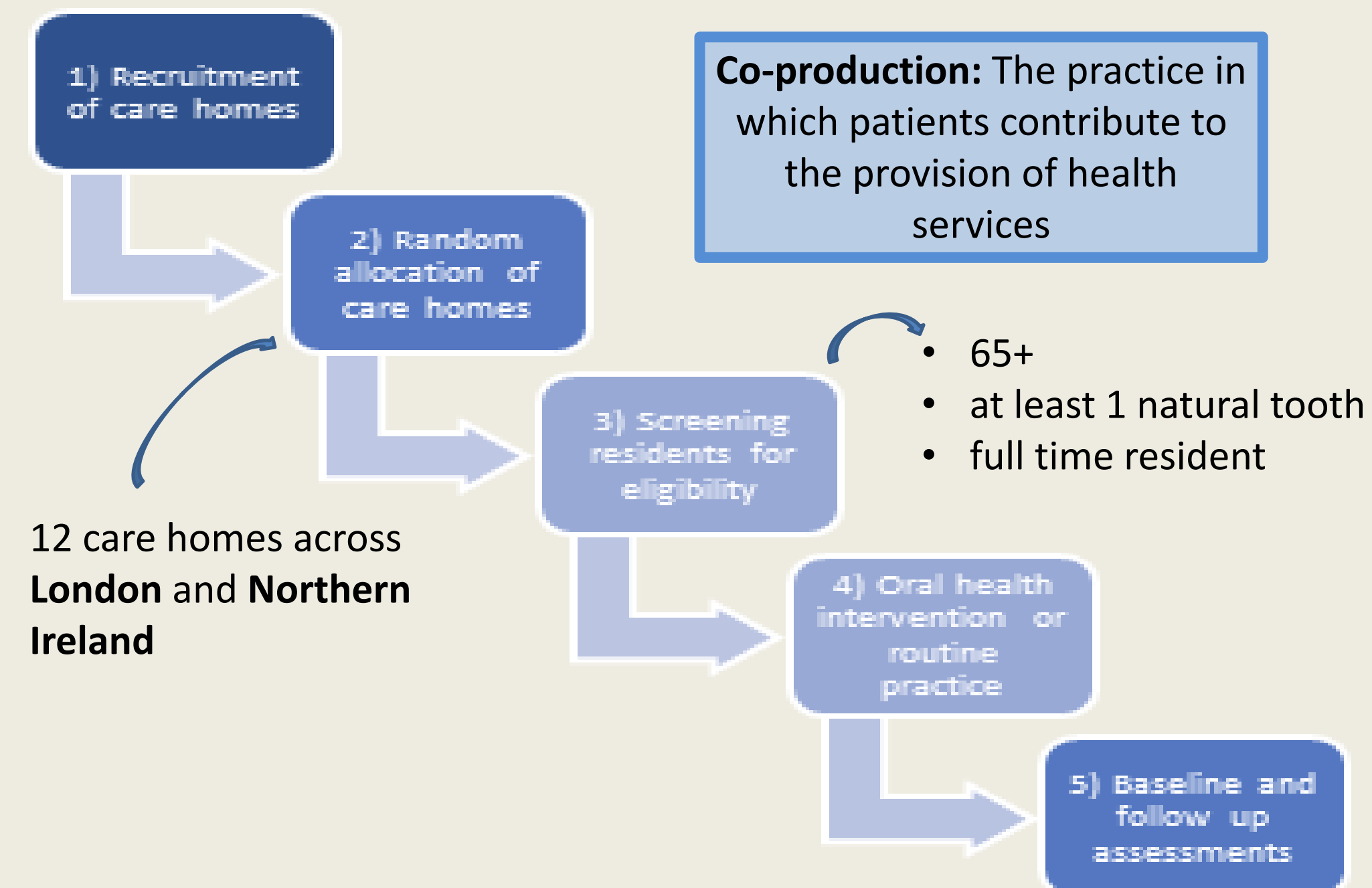


Fig. 1: TOPIC study design model

This project is funded by the National Institute for Health Research (NIHR) under its Public Health Research Programme (grant reference: PHR Project: 17/03/11). The views expressed are those of the author(s) and not necessarily those of the NIHR or the Department of Health and Social Care.

TRAINING INTERVENTION

The oral health interventions in TOPIC will be delivered by non-dental care home staff. In order to facilitate this process a PowerPoint **presentation** was developed covering the details of the study and explaining the role of the non-dental team in data collection, oral health screening and maintenance. Staff were provided with an **“Oral Health Assessment Tool”**, a **“Personal Oral Care Plan”** proforma, an **“Oral Health Poster”**. **“Tips and Tricks”** cards and a **“Weekly Oral Hygiene Record”** form for residents. An **instructional video** was also produced by the research team on how to carry out screening and best provide oral care.

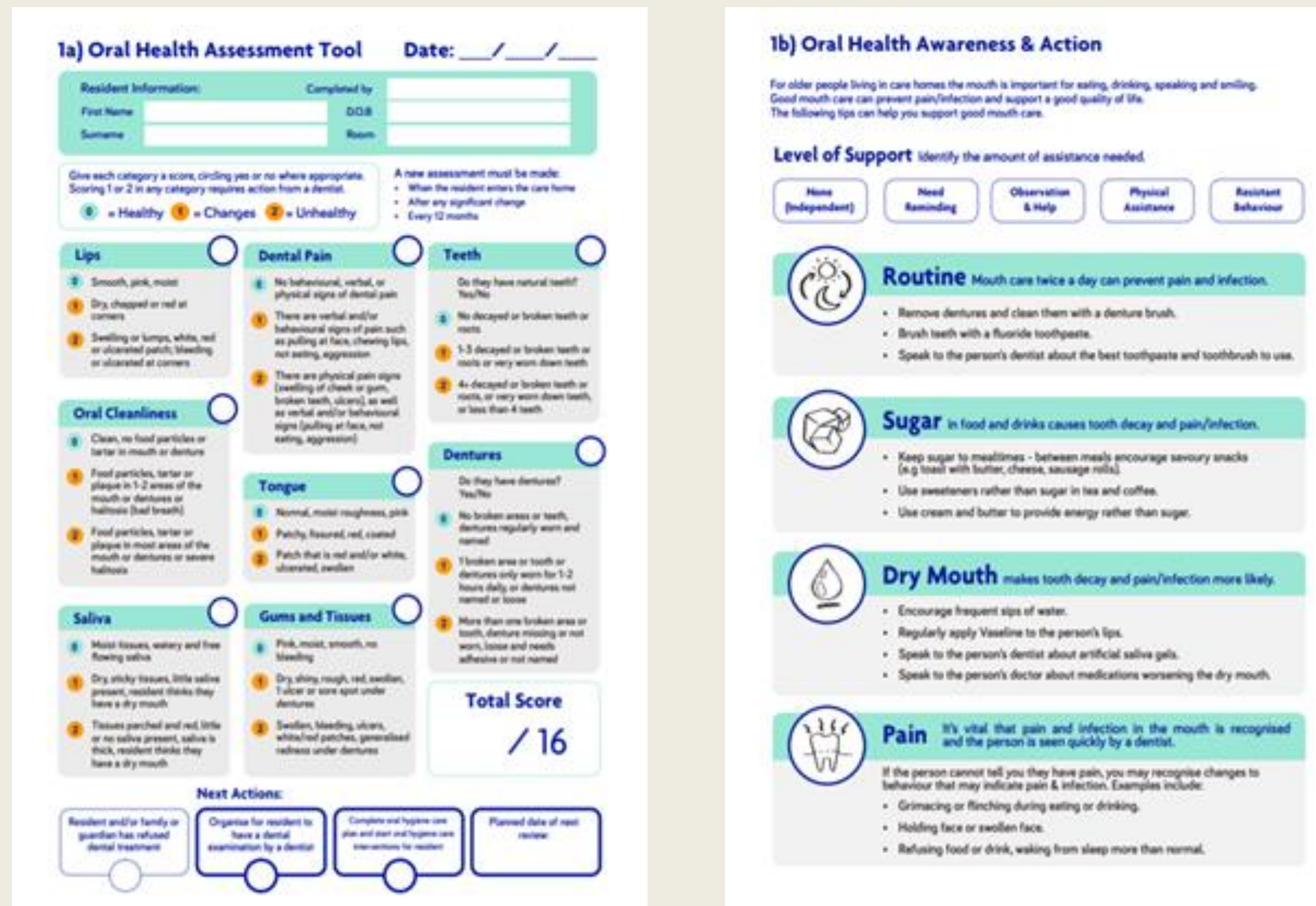


Fig. 2: TOPIC Oral Health Assessment Tool

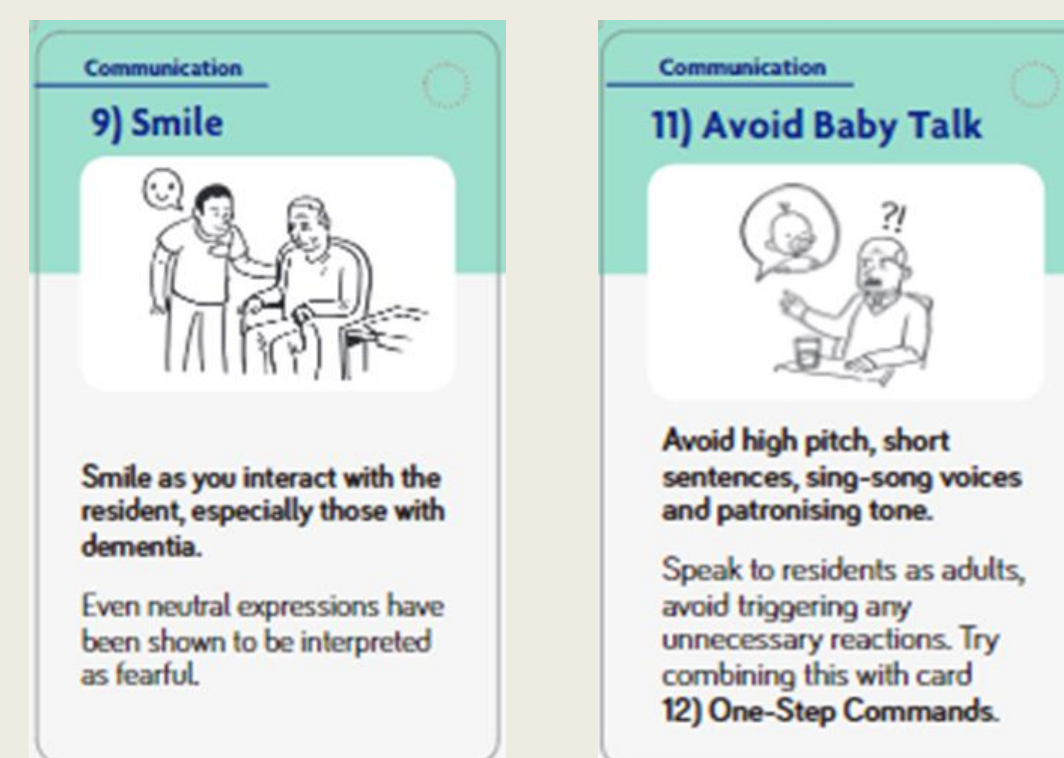


Fig. 3: TOPIC “Tips and Tricks” Cards



Fig. 4: TOPIC Instructional Video

EVALUATION

‘Mouth care is something we could probably do better. I liked the video, it was professional, informative, and reminded just how important mouth care is to our patients’
Care Home Clinical Lead (SEHSCT)

‘Okay, I was sceptical about this video. We have so much online training - but this was actually good. Short, informative and to the point. The video didn't bother with long-winded theory (which was a relief!) it told me what I needed to do & how. It is a valuable resource’
Care Home Nurse 2 (BHSCT)

‘Due to the pressures of the job, I often do not get time to provide proper oral healthcare to our residents - this is usually a task for our care assistants. This video has reinforced the importance of oral health & of course the need for regular nursing assessment using a tool like that presented in the video’

Care Home Nurse 1 (SEHSCT)
‘This is a timely resource given the focus on oral health from our regulator. We have shared this resource with our clinical teams’
Care Home Manager (BHSCT)

‘Towards the end of the video, the dentist demonstrated how one should actually brush someone's teeth. I have never had any training or direction about this ever - so this was so valuable to me. In particular, the importance of the night-time routine was something I took away from the video’
Care Home Senior Care Assistant (SEHSCT)

DISCUSSION

A key factor in the successful delivery of training is ensuring that content is relevant and at a level appropriate to the intended audience. The TOPIC training package was designed in partnership with care home staff. Hopefully, this will ensure active engagement and understanding of the training programme ultimately facilitating improvement in the oral health of residents in their care. For more information on TOPIC please scan below.



SCAN ME